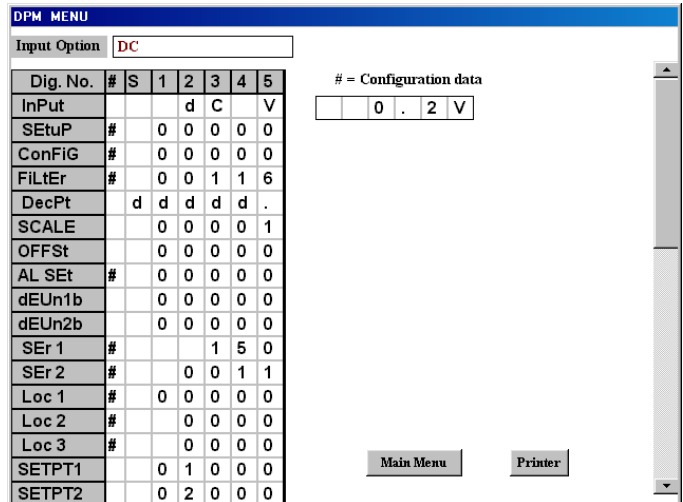
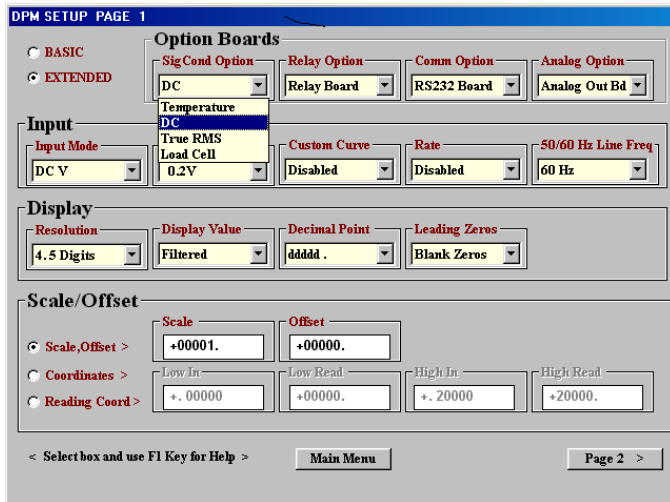




Laurel Introduces Free PC Setup Software

For Laureate Digital Panel Meters, Counters & Remote Displays

- Easy instrument setup using full-page computer screens under Windows.
- Usable online with a serial connection between the computer and instrument, or offline with no connection.
- Setup fields are automatically hidden or grayed out if a feature is not selected.
- Detailed on-screen help for each setup field at push of F1 key, avoiding need for printed manual.
- Same Setup Software handles Laureate digital panel meters, counters & timers.
- Downloadable free of charge from www.laurels.com/setup-software.htm.



In Setup View, selections are made via pull-down menus (yellow). Numerical entries are made via data fields (white). If an option or feature is not selected, the corresponding field is automatically left out or is grayed out, simplifying setup.

Once setup data has been entered under Setup View, the Menu View screen above will display the required front panel programming steps in case there is no connection between the computer and instrument. Press the F1 key for any row for a help screen.

Simplifying setup

Setting up programmable 1/8 DIN instruments from the front panel can be a challenge using only four front panel push-buttons. The more programmable features there are, the more choices to be made, the greater the need to refer to a detailed manual, and the more tedious the task.

Laurel Electronics has solved the problem for its Laureate 1/8 DIN digital panel meters and counters with new Windows-based PC Setup Software, which is of benefit whether or not the computer is connected to the instrument.

When the computer is connected to the instrument via RS-232 or RS-485, the computer can retrieve existing setup data

from the instrument. Parameters can then easily be changed via pull down menus and fill-in data fields under Setup View. The modified setup file can be saved to disk and be downloaded back into the instrument – thereby avoiding any front panel programming.

Any input fields that are not applicable to an instrument are automatically left out or grayed out. Pressing the F1 key for any field brings up a detailed help window for that field, reducing the need to refer to the printed manual.

When the computer is not connected to the instrument, setup begins with the same Setup View screens as above. Once all required data has been entered in the computer, a separate Menu View screen

displays the required front panel programming steps. The Menu View screen can be printed out, and the printout can be taken to the instrument and be filed.

The Laureate PC Setup Software can be downloaded free of charge from www.laurels.com/setup-software.htm.



Laureate 6-digit timer, one of the software configurations of the 6-digit counter.

