



Model Number							
Characteristic				18 mm Barrel Style		Dual Mount Style	
Housing Style				PBT		VALOX®	
Housing Material				PBT		VALOX®	
Temperature Range C°				-30 to 70 (-22 to 158° F)		-30 to 70 (-22 to 158° F)	
Supply Voltage				12-24 VDC		12-24 VDC	
Range	Window			Cable	Quick Disconnect	Cable	Quick Disconnect
508 mm (20")	Teachable						
		NPN Sinking	NO	VM18-NNO	VM18-NNO-Q	VM1-NNO	VM1-NNO-Q
			NC	VM18-NNC	VM18-NNC-Q	VM1-NNC	VM1-NNC-Q
		PNP Sourcing	NO	VM18-PNO	VM18-PNO-Q	VM1-PNO	VM1-PNO-Q
			NC	VM18-PNC	VM18-PNC-Q	VM1-PNC	VM1-PNC-Q

Dual Mount & 18 mm Dual-Level Sensing



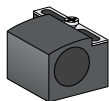
Model Number							
Characteristic				18 mm Barrel Style		Dual Mount Style	
Housing Style				PBT		VALOX®	
Housing Material				PBT		VALOX®	
Temperature Range C°				-30 to 70 (-22 to 158° F)		-30 to 70 (-22 to 158° F)	
Supply Voltage				12-24 VDC		12-24 VDC	
Range	Window			Cable	Quick Disconnect	Cable	Quick Disconnect
508 mm (20")	Teachable						
		NPN					
		Pump-in		VM18-NPI0000	VM18-NPI0000-Q	VM1-NPI0000	VM1-NPI0000-Q
		Pump-out		VM18-NP00000	VM18-NP00000-Q	VM1-NP00000	VM1-NP00000-Q
		PNP					
		Pump-in		VM18-PPI0000	VM18-PPI0000-Q	VM1-PPI0000	VM1-PPI0000-Q
		Pump-out		VM18-PPO0000	VM18-PPO0000-Q	VM1-PPO0000	VM1-PPO0000-Q

ALL Virtu series sensors use the same cables

Accessories

Mounting Brackets

Mounting bracket with indexing pin for cylindrical sensors



M18 XSZA118

Stainless Steel Mounting Bracket



M18 XSZB118

PB100 In-line accessory pushbutton for teaching window limits (for Virtu™ series sensors)

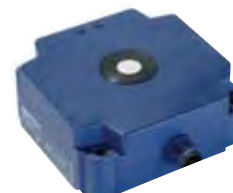


Virtu Analog



Model Number					
Characteristic					
Housing Style		18 mm Barrel Style		Dual Mount Style	
Housing Material		PBT		VALOX®	
Temperature Range C°		-30 to 70 (-22 to 158° F)		-30 to 70 (-22 to 158° F)	
Supply Voltage		15-24 VDC		15-24 VDC	
Range	Window	Cable	Quick Disconnect	Cable	Quick Disconnect
508 mm (20")	Teachable				
Voltage					
	Auto Slope	VM18-VA	VM18-VA-Q	VM1-VA	VM1-VA-Q
	Inverse Slope	VM18-VI	VM18-VI-Q	VM1-VI	VM1-VI-Q
	Direct Slope	VM18-VD	VM18-VD-Q	VM1-VD	VM1-VD-Q
Current					
	Auto Slope	VM18-CA	VM18-CA-Q	VM1-CA	VM1-CA-Q
	Inverse Slope	VM18-CI	VM18-CI-Q	VM1-CI	VM1-CI-Q
	Direct Slope	VM18-CD	VM18-CD-Q	VM1-CD	VM1-CD-Q

Virtu 30 and Virtu 80

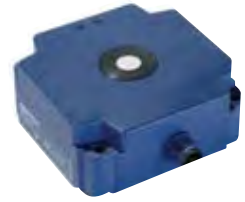


Model Number					
Characteristic					
Housing Style		18 mm Barrel Style		Dual Mount Style	
Housing Material		PBT Valox 553			
Temperature Range C°		-30 to 70 (-22 to 158° F)			
Supply Voltage		12-24 VDC			
Range	Window	Quick Disconnect			
1000 mm (39.4")	Teachable				
	PNP Sinking	NO	XX6V3A1PAM12		XX8D1A1PAM12
		NC	XX6V3A1PBM12		XX8D1A1PBM12
	NPN Sourcing	NO	XX6V3A1NAM12		XX8D1A1NAM12
		NC	XX6V3A1NBM12		XX8D1A1NBM12

ALL Virtu series sensors use the same cables

Accessories					
Straight	Connection type	Length	90°	Connection type	Length
XSZCD101Y	M12 connector	2 m (6.6')	XSZCD111Y	M12 connector	2 m (6.6')
PB100 In-line accessory push-button for teaching window limits (for Virtu series sensors)					

Virtu 30 and Virtu 80 Analog



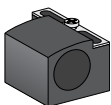
Model Number			
Characteristic			
Housing Style		30mm Barrel Style	80 x 80
Housing Material		PBT Valox 553	
Temperature Range C°		-30 to 70 (-22 to 158° F)	
Supply Voltage		15-24 VDC	
Range	Window	Quick Disconnect	
1000 mm (39.4")	Teachable		
		0-10 VDC	XX9V3A1F1M12
		4-20 mA	XX9V3A1C2M12
			XX9D1A1F1M12
			XX9D1A1C2M12

ALL Virtu series sensors use the same cables

Accessories

Mounting Brackets

Mounting bracket with indexing pin for cylindrical sensors



M18 XSZA118

Stainless Steel Mounting Bracket



M18 XSZB118

SM300 Series

Ultrasonic Sensors 12 mm & Flat-profile Proximity



12 mm ULTEM



Flat-profile ULTEM

Model Number*					
Characteristics					
Housing Style/Material		12 mm ULTEM®	Flat-profile ULTEM®	12 mm ULTEM®	Flat-profile ULTEM®
Temperature Range C°		-30 to 70 (-22° to 158° F)	-30 to 70 (-22° to 158° F)	-30 to 70 (-22° to 158° F)	-30 to 70 (-22° to 158° F)
Supply Voltage		12-24 VDC	12-24 VDC	12-24 VDC	12-24 VDC
Connection Type		3 m (10') Cable		M12 Connector	
Range	Window				
50.8 mm (2.0")	44.5 (1.75")				
	NO	SM300A-228-00	SM300A-228-00FP	SM350A-228-00	SM350A-228-00FP M8
	NC	SM300A-228-10	SM300A-228-10FP	SM350A-228-10	SM380A-228-00FP M12
101.6 mm (4.0")	25.4 mm (1.0")				SM350A-228-10FP M8
	NO	SM300A-416-00			SM350A-416-00FP M8
101.6 mm (4.0")	95.3 mm (3.75")				
	NO	SM300A-460-00	SM300A-460-00FP		SM330A-460-00FP M8 (1)
					SM340A-460-00FP M8 (2)
					SM350A-460-00FP M8
					SM380A-228-00FP M12
	NC	SM300A-460-10			SM350A-460-10FP M8

(1) PNP output only – 3 pin

(2) NPN output only – 3 pin

(*) All possible sensor configurations are not listed here

SM302 Dual-level Sensing



12 mm ULTEM



Flat-profile ULTEM

Model Number*					
Characteristics					
Housing Style/Material		12 mm ULTEM®	Flat-profile ULTEM®	12 mm ULTEM®	Flat-profile ULTEM®
Temperature Range C°		-30 to 70 (-22° to 158° F)	-30 to 70 (-22° to 158° F)	-30 to 70 (-22° to 158° F)	-30 to 70 (-22° to 158° F)
Supply Voltage		12-24 VDC	12-24 VDC	12-24 VDC	12-24 VDC
Connection Type		3 m (10') Cable		M12 Connector	
Range	Window				
50.8 mm (2.0")	19.05 mm (0.75")				
	Pump-in	SM302A-212-10		SM382A-212-10	M12
	Pump-out	SM302A-212-00	SM302A-212-00FP	SM382A-212-00	SM382A-212-00FP M12
72.6 mm (3.0")	25.4 mm (1.0")				
	Pump-in	SM302A-316-10		SM352A-316-10	Ma
	Pump-out	SM302A-316-00	SM302A-316-00FP	SM352A-316-00	SM352A-316-00FP M8
101.6 mm (4.0")	25.4 mm (1.0")				
	Pump-in	SM302A-416-10		SM382A-416-10	M12
	Pump-out	SM302A-416-00	SM302A-416-00FP	SM382A-416-00	SM382A-416-00FP M12
101.6 mm (4.0")	50.8 mm (2.0")				
	Pump-in	SM302A-432-10		SM352A-432-10	Ma
	Pump-out	SM302A-432-00	SM302A-432-00FP	SM352A-32-00	SM352A-432-00FP M8

(*) All possible sensor configurations are not listed here

Accessories for SM300 and SM302 series					
Straight	Connection type	Length	90°	Connection type	Length
XSZCD101Y	M12 connector	2 m (6.6')	XSZCD111Y	M12 connector	2 m (6.6')
XSZCS101	M8 connector	2 m (6.6')	XSZCS111	M8 connector	2 m (6.6')

Additional cable lengths are available

SM600 Series

Ultrasonic Sensors 18 mm & Flat-profile Proximity



18 mm ULTEM



18 mm Stainless



Flat-profile ULTEM

Model Number*

Characteristics		18 mm ULTEM®	Stainless Steel	Flat-profile ULTEM®	18 mm ULTEM®	Stainless Steel	Flat-profile ULTEM®
Housing Style/Material		18 mm ULTEM®	Stainless Steel	Flat-profile ULTEM®	18 mm ULTEM®	Stainless Steel	Flat-profile ULTEM®
Temperature Range C°		0 to 60 (32 to 140° F)	0 to 60 (32 to 140° F)	0 to 60 (32 to 140° F)	0 to 60 (32 to 140° F)	0 to 60 (32 to 140° F)	0 to 60 (32 to 140° F)
Connection Type		3 m (10') Cable			M12 Connector		
Supply Voltage		12-24 VDC			12-24 VDC		
Range	Window						
51 mm (2")	1.6 mm (1/16")						
	NO	SM600A-201-00	SM600A-201-00S	SM600A-201-00FP	SM650A-201-00	SM650A-201-00S	SM650A-201-00FP
	NC	SM600A-201-10	SM600A-201-10S	SM600A-201-10FP	SM650A-201-10	SM650A-201-10S	SM650A-201-10FP
	13 mm (1/2")						
	NO	SM600A-208-00	SM600A-208-00S	SM600A-208-00FP	SM650A-208-00	SM650A-208-00S	SM650A-208-00FP
	NC	SM600A-208-10	SM600A-208-10S	SM600A-208-10FP	SM650A-208-10	SM650A-208-10S	SM650A-208-10FP
	19 mm (3/4")						
	NO	SM600A-212-00	SM600A-212-00S	SM600A-212-00FP	SM650A-212-00	SM650A-212-00S	SM650A-212-00FP
	NC	SM600A-212-10	SM600A-212-10S	SM600A-212-10FP	SM650A-212-10	SM650A-212-10S	SM650A-212-10FP
	25 mm (1")						
	NO	SM600A-216-00	SM600A-216-00S	SM600A-216-00FP	SM650A-216-00	SM650A-216-00S	SM650A-216-00FP
	NC	SM600A-216-10	SM600A-216-10S	SM600A-216-10FP	SM650A-216-10	SM650A-216-10S	SM650A-216-10FP
77 mm (3")	1.6 mm (1/16")						
	NO	SM600A-301-00	SM600A-301-00S	SM600A-301-00FP	SM650A-301-00	SM650A-301-00S	SM650A-301-00FP
	NC	SM600A-301-10	SM600A-301-10S	SM600A-301-10FP	SM650A-301-10	SM650A-301-10S	SM650A-301-10FP
	13 mm (1/2")						
	NO	SM600A-308-00	SM600A-308-00S	SM600A-308-00FP	SM650A-308-00	SM650A-308-00S	SM650A-308-00FP
	NC	SM600A-308-10	SM600A-308-10S	SM600A-308-10FP	SM650A-308-10	SM650A-308-10S	SM650A-308-10FP
	19 mm (3/4")						
	NO	SM600A-312-00	SM600A-312-00S	SM600A-312-00FP	SM650A-312-00	SM650A-312-00S	SM650A-312-00FP
	NC	SM600A-312-10	SM600A-312-10S	SM600A-312-10FP	SM650A-312-10	SM650A-312-10S	SM650A-312-10FP
	25 mm (1")						
	NO	SM600A-316-00	SM600A-316-00S	SM600A-316-00FP	SM650A-316-00	SM650A-316-00S	SM650A-316-00FP
	NC	SM600A-316-10	SM600A-316-10S	SM600A-316-10FP	SM650A-316-10	SM650A-316-10S	SM650A-316-10FP
	51 mm (2")						
	NO	SM600A-332-00	SM600A-332-00S	SM600A-332-00FP	SM650A-332-00	SM650A-332-00S	SM650A-332-00FP
	NC	SM600A-332-10	SM600A-332-10S	SM600A-332-10FP	SM650A-332-10	SM650A-332-10S	SM650A-332-10FP
102 mm (4")	1.6 mm (1/16")						
	NO	SM600A-401-00	SM600A-401-00S	SM600A-401-00FP	SM650A-401-00	SM650A-401-00S	SM650A-401-00FP
	NC	SM600A-401-10	SM600A-401-10S	SM600A-401-10FP	SM650A-401-10	SM650A-401-10S	SM650A-401-10FP
	13 mm (1/2")						
	NO	SM600A-408-00	SM600A-408-00S	SM600A-408-00FP	SM650A-408-00	SM650A-408-00S	SM650A-408-00FP
	NC	SM600A-408-10	SM600A-408-10S	SM600A-408-10FP	SM650A-408-10	SM650A-408-10S	SM650A-408-10FP
	19 mm (3/4")						
	NO	SM600A-412-00	SM600A-412-00S	SM600A-412-00FP	SM650A-412-00	SM650A-412-00S	SM650A-412-00FP
	NC	SM600A-412-10	SM600A-412-10S	SM600A-412-10FP	SM650A-412-10	SM650A-412-10S	SM650A-412-10FP
	25 mm (1")						
	NO	SM600A-416-00	SM600A-416-00S	SM600A-416-00FP	SM650A-416-00	SM650A-416-00S	SM650A-416-00FP
	NC	SM600A-416-10	SM600A-416-10S	SM600A-416-10FP	SM650A-416-10	SM650A-416-10S	SM650A-416-10FP
	51 mm (2")						
	NO	SM600A-432-00	SM600A-432-00S	SM600A-432-00FP	SM650A-432-00	SM650A-432-00S	SM650A-432-00FP
	NC	SM600A-432-10	SM600A-432-10S	SM600A-432-10FP	SM650A-432-10	SM650A-432-10S	SM650A-432-10FP
	77 mm (3")						
	NO	SM600A-448-00	SM600A-448-00S	SM600A-448-00FP	SM650A-448-00	SM650A-448-00S	SM650A-448-00FP
	NC	SM600A-448-10	SM600A-448-10S	SM600A-448-10FP	SM650A-448-10	SM650A-448-10S	SM650A-448-10FP

(* All possible sensor configurations are not listed here

Accessories for SM600 Series					
Straight	Connection type	Length	90°	Connection type	Length
XSZCD101Y	M12 connector	2 m (6.6')	XSZCD111Y	M12 connector	2 m (6.6')
Additional cable lengths are available					

SM600 Series

Ultrasonic Sensors 18 mm & Flat-profile Proximity (continued)



18 mm ULTEM



18 mm Stainless



Flat-profile ULTEM

Model Number*								
Characteristics								
Housing Style/Material	18 mm ULTEM®		Stainless Steel		Flat-profile ULTEM®		18 mm ULTEM®	
Temperature Range C°	0 to 60 (32 to 140° F)		0 to 60 (32 to 140° F)		0 to 60 (32 to 140° F)		0 to 60 (32 to 140° F)	
Connection Type	3 m (10') Cable						M12 Connector	
Supply Voltage	12-24 VDC						12-24 VDC	
Range	Window							
127 mm (5")	1.6 mm (1/16")							
	NO	SM600A-501-00	SM600A-501-00S	SM600A-501-00FP	SM650A-501-00	SM650A-501-00S	SM650A-501-00FP	
	NC	SM600A-501-10	SM600A-501-10S	SM600A-501-10FP	SM650A-501-10	SM650A-501-10S	SM650A-501-10FP	
	13 mm (1/2")							
	NO	SM600A-508-00	SM600A-508-00S	SM600A-508-00FP	SM650A-508-00	SM650A-508-00S	SM650A-508-00FP	
	NC	SM600A-508-10	SM600A-508-10S	SM600A-508-10FP	SM650A-508-10	SM650A-508-10S	SM650A-508-10FP	
	19 mm (3/4")							
	NO	SM600A-512-00	SM600A-512-00S	SM600A-512-00FP	SM650A-512-00	SM650A-512-00S	SM650A-512-00FP	
	NC	SM600A-512-10	SM600A-512-10S	SM600A-512-10FP	SM650A-512-10	SM650A-512-10S	SM650A-512-10FP	
	25 mm (1")							
	NO	SM600A-516-00	SM600A-516-00S	SM600A-516-00FP	SM650A-516-00	SM650A-516-00S	SM650A-516-00FP	
	NC	SM600A-516-10	SM600A-516-10S	SM600A-516-10FP	SM650A-516-10	SM650A-516-10S	SM650A-516-10FP	
	51 mm (2")							
	NO	SM600A-532-00	SM600A-532-00S	SM600A-532-00FP	SM650A-532-00	SM650A-532-00S	SM650A-532-00FP	
	NC	SM600A-532-10	SM600A-532-10S	SM600A-532-10FP	SM650A-532-10	SM650A-532-10S	SM650A-532-10FP	
	77 mm (3")							
	NO	SM600A-548-00	SM600A-548-00S	SM600A-548-00FP	SM650A-548-00	SM650A-548-00S	SM650A-548-00FP	
	NC	SM600A-548-10	SM600A-548-10S	SM600A-548-10FP	SM650A-548-10	SM650A-548-10S	SM650A-548-10FP	
152 mm (6")	1.6 mm (1/16")							
	NO	SM600A-601-00	SM600A-601-00S	SM600A-601-00FP	SM650A-601-00	SM650A-601-00S	SM650A-601-00FP	
	NC	SM600A-601-10	SM600A-601-10S	SM600A-601-10FP	SM650A-601-10	SM650A-601-10S	SM650A-601-10FP	
	13 mm (1/2")							
	NO	SM600A-608-00	SM600A-608-00S	SM600A-608-00FP	SM650A-608-00	SM650A-608-00S	SM650A-608-00FP	
	NC	SM600A-608-10	SM600A-608-10S	SM600A-608-10FP	SM650A-608-10	SM650A-608-10S	SM650A-608-10FP	
	19 mm (3/4")							
	NO	SM600A-612-00	SM600A-612-00S	SM600A-612-00FP	SM650A-612-00	SM650A-612-00S	SM650A-612-00FP	
	NC	SM600A-612-10	SM600A-612-10S	SM600A-612-10FP	SM650A-612-10	SM650A-612-10S	SM650A-612-10FP	
	25 mm (1")							
	NO	SM600A-616-00	SM600A-616-00S	SM600A-616-00FP	SM650A-616-00	SM650A-616-00S	SM650A-616-00FP	
	NC	SM600A-616-10	SM600A-616-10S	SM600A-616-10FP	SM650A-616-10	SM650A-616-10S	SM650A-616-10FP	
	51 mm (2")							
	NO	SM600A-632-00	SM600A-632-00S	SM650A-632-00	SM650A-632-00S	SM650A-632-00FP	SM650A-732-00FP	
	NC	SM600A-632-10	SM600A-632-10S	SM650A-632-10	SM650A-632-10S	SM650A-632-10FP	SM650A-732-10FP	
	77 mm (3")							
	NO	SM600A-648-00	SM600A-648-00S	SM600A-648-00FP	SM650A-648-00	SM650A-648-00S	SM650A-648-00FP	
	NC	SM600A-648-10	SM600A-648-10S	SM600A-648-10FP	SM650A-648-10	SM650A-648-10S	SM650A-648-00FP	
	127 mm (5")							
	NO	SM600A-680-00	SM600A-680-00S	SM600A-680-00FP	SM650A-680-00	SM650A-680-00S	SM650A-680-00FP	
	NC	SM600A-680-10	SM600A-680-10S	SM600A-680-10FP	SM650A-680-10	SM650A-680-10S	SM650A-680-10FP	

(* All possible sensor configurations are not listed here)

Accessories for SM600 Series

Straight	Connection type	Length	90°	Connection type	Length
XSZCD101Y	M12 connector	2 m (6.6')	XSZCD111Y	M12 connector	2 m (6.6')
Additional cable lengths are available					

(continued)

Model Number*												
Characteristics												
Housing Style/Material	18 mm ULTEM®		Stainless Steel		Flat-profile ULTEM®		18 mm ULTEM®		Stainless Steel		Flat-profile ULTEM®	
Temperature Range C°	0 to 60 (32 to 140° F)		0 to 60 (32 to 140° F)		0 to 60 (32 to 140° F)		0 to 60 (32 to 140° F)		0 to 60 (32 to 140° F)		0 to 60 (32 to 140° F)	
Connection Type	3 m (10') Cable						M12 Connector					
Supply Voltage	12-24 VDC						12-24 VDC					
Range	Window											
178 mm (7")	1.6 mm (1/16")											
	NO	SM600A-701-00	SM600A-701-00S	SM600A-701-00FP	SM650A-701-00	SM650A-701-00S	SM650A-701-00FP					
	NC	SM600A-701-10	SM600A-701-10S	SM600A-701-10FP	SM650A-701-10	SM650A-701-10S	SM650A-701-10FP					
	13 mm (1/2")											
	NO	SM600A-708-00	SM600A-708-00S	SM600A-708-00FP	SM650A-708-00	SM650A-708-00S	SM650A-708-00FP					
	NC	SM600A-708-10	SM600A-708-10S	SM600A-708-10FP	SM650A-708-10	SM650A-708-10S	SM650A-708-10FP					
	9 mm (3/4")											
	NO	SM600A-712-00	SM600A-712-00S	SM600A-712-00FP	SM650A-712-00	SM650A-712-00S	SM650A-712-00FP					
	NC	SM600A-712-10	SM600A-712-10S	SM600A-712-10FP	SM650A-712-10	SM650A-712-10S	SM650A-712-10FP					
	25 mm (1")											
	NO	SM600A-716-00	SM600A-716-00S	SM600A-716-00FP	SM650A-716-00	SM650A-716-00S	SM650A-716-00FP					
	NC	SM600A-716-10	SM600A-716-10S	SM600A-716-10FP	SM650A-716-10	SM650A-716-10S	SM650A-716-10FP					
	51 mm (2")											
	NO	SM600A-732-00	SM600A-732-00S	SM600A-732-00FP	SM650A-732-00	SM650A-732-00S	SM650A-732-00FP					
	NC	SM600A-732-10	SM600A-732-10S	SM600A-732-10FP	SM650A-732-10	SM650A-732-10S	SM650A-732-10FP					
	77 mm (3")											
	NO	SM600A-748-00	SM600A-748-00S	SM600A-748-00FP	SM650A-748-00	SM650A-748-00S	SM650A-748-00FP					
	NC	SM600A-748-10	SM600A-748-10S	SM600A-748-10FP	SM650A-748-10	SM650A-748-10S	SM650A-748-10FP					
	127 mm (5")											
	NO	SM600A-780-00	SM600A-780-00S	SM600A-780-00FP	SM650A-780-00	SM650A-780-00S	SM650A-780-00FP					
	NC	SM600A-780-10	SM600A-780-10S	SM600A-780-10FP	SM650A-780-10	SM650A-780-10S	SM650A-780-10FP					

(*) All possible sensor configurations are not listed here

SM602 Dual-level

Model Number*												
Characteristics												
Housing Style/Material	18 mm ULTEM®		Stainless Steel		Flat-profile ULTEM®		18 mm ULTEM®		Stainless Steel		Flat-profile ULTEM®	
Temperature Range C°	0 to 60 (32 to 140° F)		0 to 60 (32 to 140° F)		0 to 60 (32 to 140° F)		0 to 60 (32 to 140° F)		0 to 60 (32 to 140° F)		0 to 60 (32 to 140° F)	
Connection Type	3 m (10') Cable						M12 Connector					
Supply Voltage	12-24 VDC						12-24 VDC					
Near Limit/Alarm	Far Limit/Alarm											
95.3 mm (3.75")	102 mm (4")											
	Pump-out	SM602A-404-00	SM602A-404-00S	SM602A-404-00FP	SM652A-404-00	SM652A-404-00S	SM652A-404-00FP					
	Pump-in		SM602A-404-10			SM652A-404-10						
	127 mm (5")											
	Pump-out	SM602A-520-00			SM652A-520-00							
	Pump-in	SM602A-520-10			SM652A-520-10							
	76.2 mm (3")											
	Pump-out	SM602A-416-00	SM602A-416-00S	SM602A-416-00FP	SM652A-416-00	SM652A-416-00S	SM652A-416-00FP					
	Pump-in	SM602A-416-10			SM652A-416-10							
	127 mm (5")											
	Pump-out	SM602A-532-00			SM652A-532-00							
	Pump-in	SM602A-532-10			SM652A-532-10							
	51 mm (2")											
	Pump-out	SM602A-432-00	SM602A-432-00S	SM602A-432-00FP	SM652A-432-00	SM652A-432-00S	SM652A-432-00FP					
	Pump-in	SM602A-432-10	SM652A-432-10									
	76.2 mm (3")											
	Pump-out		SM602A-532-00			SM652A-532-00						
	Pump-in		SM602A-532-10			SM652A-532-10						
	102 mm (4")											
	152 mm (6")											
	Dual Alarm Normally Open											
		SM602A-632-20			SM652A-632-20							

(*) All possible sensor configurations are not listed here

Accessories for SM602 Series					
Straight	Connection type	Length	90°	Connection type	Length
XSZCD101Y	M12 connector	2 m (6.6')	XSZCD111Y	M12 connector	2 m (6.6')
Additional cable lengths are available					

Model Number*								
Characteristics								
Housing Style/Material	30 mm ULTEM®		30 mm Stainless		30 mm ULTEM®		30 mm ULTEM®	
Temperature Range C°	0 to 60 (32 to 140° F)		0 to 60 (32 to 140° F)		0 to 60 (32 to 140° F)		0 to 60 (32 to 140° F)	
Connection Type	3 m (10') Cable				M12 Connector			
Supply Voltage	15-24 VDC				15-24 VDC			
Range	Window							
102 mm (4")	70 mm (2.75")							
	Inv. 0-10V 2.5ms	SM606A-444-00	SM606A-444-00S	SM606A-444-00FP	SM656A-444-00	SM656A-444-00S	SM656A-444-00FP	
	Dir. 0-10 V 2.5 ms	SM606A-444-01	SM606A-444-01S	SM606A-444-01FP	SM656A-444-01	SM656A-444-01S	SM656A-444-01FP	
	Inv. 0-10V 1.5 ms	SM606A-444-02	SM606A-444-02S	SM606A-444-02FP	SM656A-444-02	SM656A-444-02S	SM656A-444-02FP	
	Inv. 0-10V 2.5 ms	SM606A-444-03	SM606A-444-03S	SM606A-444-03FP	SM656A-444-03	SM656A-444-03S	SM656A-444-03FP	
	Dir. 0-10V 1.5 ms	SM606A-444-04	SM606A-444-04S	SM606A-444-04FP	SM656A-444-04	SM656A-444-04S	SM656A-444-04FP	
152 mm (6")	117 mm (4.62")							
	Inv. 0-10V 2.5ms	SM606A-674-00	SM606A-674-00S	SM606A-674-00FP	SM656A-674-00	SM656A-674-00S	SM656A-674-00FP	
	Dir. 0-10 V 2.5 ms	SM606A-674-01	SM606A-674-01S	SM606A-674-01FP	SM656A-674-01	SM656A-674-01S	SM656A-674-01FP	
	Inv. 0-10V 1.5 ms	SM606A-674-02	SM606A-674-02S	SM606A-674-02FP	SM656A-674-02	SM656A-674-02S	SM656A-674-02FP	
	Inv. 0-10V 2.5 ms	SM606A-674-03	SM606A-674-03S	SM606A-674-03FP	SM656A-674-03	SM656A-674-03S	SM656A-674-03FP	
	Dir. 0-10V 1.5 ms	SM606A-674-04	SM606A-674-04S	SM606A-674-04FP	SM656A-674-04	SM656A-674-04S	SM656A-674-04FP	

(*) All possible sensor configurations are not listed here

SM606S

All the above 0-10 V version sensors are available with a 4-20 mA output in the flat profile housing only.

To order, replace the number "0" in the reference by "1".

Example: For pre-cabled versions: SM606A-444-00FP becomes SM606A-444-10FP.

For connector versions: SM656A-444-00FP becomes SM656A-444-10FP.

Sensing distances: refer to www.SESensors.com

Accessories for SM606 Series

Straight	Connection type	Length	90°	Connection type	Length
XSCD101Y	M12 connector	2 m (6.6')	XSZCD111Y	M12 connector	2 m (6.6')

Other cable lengths are available

SM607 Small Target Sensing

Model Number*								
Characteristics								
Housing Style/Material	18 mm ULTEM®		Stainless Steel		Flat-profile ULTEM®		18 mm ULTEM®	
Temperature Range C°	0 to 60 (32 to 140° F)		0 to 60 (32 to 140° F)		0 to 60 (32 to 140° F)		0 to 60 (32 to 140° F)	
Connection Type	3 m (10') Cable				M12 Connector			
Supply Voltage	12-24 VDC				12-24 VDC			
Range	Window							
38.1 mm (1.5")	12.7 mm (0.5")							
	Straight label edge NO	SM607A-A08-01	SM607A-A08-01S	SM607A-A08-01FP	SM657A-A08-01	SM657A-A08-01S	SM657A-A08-01FP	
	Circular label edge NO	SM607A-A08-02	SM607A-A08-02S	SM607A-A08-02FP	SM657A-A08-02	SM657A-A08-02S	SM657A-A08-02FP	
51 mm (2")	3 mm (0.125")							
		SM607A-202-00	SM607A-202-00S	SM607A-202-00FP	SM657A-202-00	SM657A-202-00S	SM657A-202-00FP	
	6 mm (0.25")							
		SM607A-204-00	SM607A-204-00S	SM607A-204-00FP	SM657A-204-00	SM657A-204-00S	SM657A-204-00FP	
	13 mm (0.5")							
		SM607A-208-00	SM607A-208-00S	SM607A-208-00FP	SM657A-208-00	SM657A-208-00S	SM657A-208-00FP	

(*) All possible sensor configurations are not listed here

Accessories for SM607 Series

Straight	Connection type	Length	90°	Connection type	Length
XSZCD101Y	M12 connector	2 m (6.6')	XSZCD111Y	M12 connector	2 m (6.6')

Additional cable lengths are available



30 mm ULTEM®(1 & 2 m)



30 mm Stainless (1 & 2 m)



30 mm ULTEM®(8 m)

Model Number*

Model Number*				
Characteristics				
Housing Style/Material	30 mm ULTEM®	30 mm Stainless	30 mm ULTEM®	30 mm Stainless
Temperature Range C°	0 to 50 (32 to 122° F) (Ultem) -20 to 50 (-4 to 122° F) (Stainless)			
Connection Type	3 m (10') Cable		M12 Connector	
Supply Voltage	12-24 VDC		12-24 VDC	
Sensing Range				
51 mm (2") - 1 m (39")				
NO NPN & PNP	SM900A-100000	SM900A-100000S	SM950A-100000	SM950A-100000S
NC NPN & PNP	SM900A-110000	SM900A-110000S	SM950A-110000	SM950A-110000S
Complementary NPN	SM900A-120000	SM900A-120000S	SM950A-120000	SM950A-120000S
Complementary PNP	SM900A-130000	SM900A-130000S	SM950A-130000	SM950A-130000S
Object Proximity	SM900A-100000OB	SM900A-100000OBS	SM950A-100000OB	SM950A-100000OBS
120 mm (4.7") - 2 m (79")				
NO NPN & PNP	SM900A-400000	SM900A-400000S	SM950A-400000	SM950A-400000S
NC NPN & PNP	SM900A-410000	SM900A-410000S	SM950A-410000	SM950A-410000S
Complementary NPN	SM900A-420000	SM900A-420000S	SM950A-420000	SM950A-420000S
Object Proximity	SM900A-400000OB	SM900A-400000OBS	SM950A-400000OB	SM950A-400000OBS
120 mm (4.7") - 1 m (39")				
NO NPN & PNP Stainless Steel Transducer		SM9000A-700000STS		SM9500A-700000STS
203 mm (8") - 8 m (315")				
Object Proximity	SM9000A-800000		SM9500A-800000	

(*) All possible sensor configurations are not listed here

Accessories for SM900 Series

Straight	Connection type	Length	90°	Connection type	Length
XSZCD101Y	M12 connector	2 m (6.6')	XSZCD111Y	M12 connector	2 m (6.6')

Additional cable lengths are available

SM902 Series

Ultrasonic Sensors Dual-level Sensors



30 mm ULTEM®(1 & 2 m)



30 mm Stainless (1 & 2 m)



30 mm ULTEM®(8 m)

Model Number*				
Characteristics				
Housing Style/Material	30 mm ULTEM®	30 mm Stainless	30 mm ULTEM®	30 mm Stainless
Temperature Range C°	0 to 50 (32 to 122° F) (Utem) -20 to 50 (-4 to 122° F) (Stainless)			
Connection Type	3 m (10') Cable		M12 Connector	
Supply Voltage	12-24 VDC		12-24 VDC	
Sensing Range				
51 mm (2") - 1 m (39")				
Pump-out latch	SM902A-100000	SM902A-100000S	SM952A-100000	SM952A-100000S
w/ Loss of Echo Hold	SM902A-100000LE	SM902A-100000LES	SM952A-100000LE	SM952A-100000LES
Pump-in latch	SM902A-110000	SM902A-110000S	SM952A-110000	SM952A-110000S
w/ Loss of Echo Hold	SM902A-110000LE	SM902A-110000LES	SM952A-110000LE	SM952A-110000LES
Dual Setpoint (NPN)	SM902A-124000	SM902A-124000S	SM952A-124000	SM952A-124000S
Pump-in latch, w/alarm (NPN)	SM902A-144100	SM902A-144100S	SM952A-144100	SM952A-144100S
Pump-in latch w/setpoint (NPN)	SM902A-164000	SM902A-164000S	SM952A-164000	SM952A-164000S
120 mm (4.7") - 2 m (79")				
Pump-out latch	SM902A-400000	SM902A-400000S	SM952A-400000	SM952A-400000S
w/ Loss of Echo Hold	SM902A-400000LE	SM902A-400000LES	SM952A-400000LE	SM952A-400000LES
Pump-in latch	SM902A-410000	SM902A-410000S	SM952A-410000	SM952A-410000S
w/ Loss of Echo Hold	SM902A-410000LE	SM902A-410000LES	SM952A-410000LE	SM952A-410000LES
Dual Setpoint (NPN)	SM902A-424000	SM902A-424000S	SM952A-424000	SM952A-424000S
Pump-in latch, w/alarm (NPN)	SM902A-444000	SM902A-444000S	SM952A-444000	SM952A-444000S
Pump-out latch, w/alarm (PNP)	SM902A-4560000	SM902A-4560000S	SM952A-4560000	SM956A-4560000
Pump-in latch w/setpoint (NPN)	SM902A-464000	SM902A-464000S	SM952A-464000	SM952A-464000S
120 mm (4.7") - 1 m (39")				
Pump-out latch Stainless Steel Transducer		SM902A-700000STS		SM952A-700000STS
Pump-in latch Stainless Steel Transducer		SM902A-710000STS		SM952A-710000STS
Dual Setpoint (NPN) Stainless Steel Transducer		SM902A-724000STS		SM952A-724000STS
203 mm (8") - 8 m (315")				
Pump-in latch	SM902A-810000		SM952A-810000	
Dual Setpoint (NPN)	SM902A-824000		SM952A-824000	

(*) All possible sensor configurations are not listed here

Accessories for SM902 Series					
Straight	Connection type	Length	90°	Connection type	Length
XSZCD101Y	M12 connector	2 m (6.6')	XSZCD111Y	M12 connector	2 m (6.6')
Additional cable lengths are available					



30 mm ULTEM®(1 & 2 m)



30 mm Stainless (1 & 2 m)



30 mm ULTEM®(8 m)

Model Number*				
Characteristics				
Housing Style/Material	30 mm ULTEM®	30 mm Stainless	30 mm ULTEM®	30 mm Stainless
Temperature Range C°	0 to 50 (32 to 122° F) (Utem) -20 to 50 (-4 to 122° F) (Stainless)			
Connection Type	3 m (10') Cable		M12 Connector	
Supply Voltage	15-24 VDC		15-24 VDC	
Sensing Range	51 mm (2") - 1 m (39")			
Inverse 0-10V				
Min output state on loss of echo	SM906A-100000	SM906A-100000S	SM956A-100000	SM956A-100000S
Hold on loss of echo min. power up	SM906A-102000	SM906A-102000S	SM956A-102000	SM956A-102000S
Hold on loss of echo max. power up	SM906A-103000	SM906A-103000S	SM956A-103000	SM956A-103000S
Direct 0-10V				
Max output state on loss of echo	SM906A-111000	SM906A-111000S	SM956A-111000	SM956A-111000S
Inverse 4-20 mA				
Min output state on loss of echo	SM906A-120000	SM906A-120000S	SM956A-120000	SM956A-120000S
Hold on loss of echo min. power up	SM906A-122000	SM906A-122000S	SM956A-122000	SM956A-122000S
Direct 4-20 mA				
Hold on loss of echo min. power up	SM906A-132000	SM906A-132000S	SM956A-132000	SM956A-132000S
120 mm (4.7") - 2 m (79")				
Inverse 0-10V				
Min output state on loss of echo	SM906A-400000	SM906A-400000S	SM956A-400000	SM956A-400000S
Hold on loss of echo min. power up	SM906A-402000	SM906A-402000S	SM956A-402000	SM956A-402000S
Hold on loss of echo max. power up	SM906A-403000	SM906A-403000S	SM956A-403000	SM956A-403000S
Direct 0-10V				
Max output state on loss of echo	SM906A-411000	SM906A-411000S	SM956A-411000	SM956A-411000S
Inverse 4-20 mA				
Min output state on loss of echo	SM906A-420000	SM906A-420000S	SM956A-420000	SM956A-420000S
Hold on loss of echo min. power up	SM906A-422000	SM906A-422000S	SM956A-422000	SM956A-422000S
Direct 4-20 mA				
Hold on loss of echo min. power up	SM906A-432000	SM906A-432000S	SM956A-432000	SM956A-432000S
120 mm (4.7") - 1 m (39")				
Inverse 4-20 mA				
Max output state on loss of echo Stainless Steel Transducer		SM906A-72100STS		SM956A-72100STS
Hold on loss of echo max power up Stainless Steel Transducer		SM906A-723000STS		SM956A-723000STS
203 mm (8") - 8 m (315")				
Inverse 0-10V				
Min output state on loss of echo	SM906A-800000		SM956A-800000	
Inverse 4-20 mA				
Min output state on loss of echo	SM906A-820000		SM956A-820000	
Direct 4-20 mA				
Hold on loss of echo min. power up	SM906A-832000		SM956A-832000	

(* All possible sensor configurations are not listed here)

Accessories for SM900 Series					
Straight	Connection type	Length	90°	Connection type	Length
XXZAC130	M12 connector	2 m (6.6')	XXZAC132	M12 connector	2 m (6.6')

Additional cable lengths are available

For application assistance or to find your distributor
please call 1-800-435-2121
or visit www.SESensors.com

Schneider Electric Sensor Competency Center
1875 Founders Drive, Dayton OH 45420-4017

Catalog No. 9006CT0606R12/076 January 2008 © Schneider Electric
All Rights Reserved