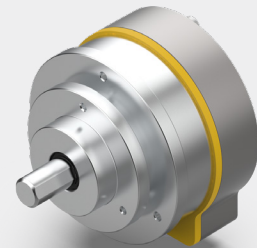


Your Global Automation Partner

# TURCK

## Sensors Innovative Custom Solutions



# A Global Leader in Industrial Automation

Turck's sensors, connectivity, and fieldbus technology products are built to be the best. As one of the most **prominent** sensor manufacturers **in the world**, we even back our sensors with a **lifetime warranty**. Turck works by bringing **rugged engineering** solutions to your industrial automation applications.

**85,000+**  
SOLUTIONS

**50+**  
YEARS OF INNOVATION

**2,000+**  
EXPERIENCED SALES REPRESENTATIVES

Pioneer in non-contact  
**sensing** technology

Developed innovative **connectivity**  
solutions in response to our customers' needs

Recognized the need for advanced **I/O solutions**  
in harsh duty environments

**SUPPORT &  
DEDICATED SERVICE**

**EXTENSIVE WARRANTY**



**4,000+**  
APPLICATION EXPERTS

RESPOND  
and SOLVE **over 1,200** inquiries  
per day



Strategically placed manufacturing facilities in the

**USA** with **30** GLOBAL  
SUBSIDIARIES

**GLOBAL BUT LOCAL...**

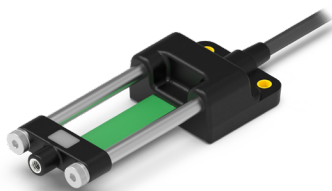
**60** representations worldwide



## When Custom Makes More Sense

Sometimes off-the-shelf sensing solutions aren't the right solution. For decades, Turck has built a solid reputation of creating cost-effective, custom products to meet its customers' unique application challenges. Take advantage of our in-house design,

engineering and manufacturing expertise right here in the US, backed by global support. You'll save time and resources when you work with the team at Turck. We take the hassle out of creating custom and semi-custom solutions.



## When others say no, Turck Finds a Way

Let us help you with:

- Simple or complex sensor modifications
- Unique housings and mounting brackets
- Kitting and custom labeling
- Creating sub-assemblies
- Rapid prototyping
- Much more



## Key Applications & Industries

Turck's custom manufactured solutions are customer-focused, designed to withstand nearly any application and fit the specific needs of your industry. From the harshest conditions in oil and gas to meeting wash down requirements in food processing to creating custom solutions for outdoor use, Turck finds a way to make it work.

Our capabilities include custom tooling, 3D printing, unique wiring and harness solutions, including over-molded designs, modifying existing CAD drawings and much more. Turck's reputation is built on creating rugged, industrial solutions that won't let you down.

Contact us today to find out more about our high-quality, fast turn-around custom solutions for low or high volume projects. Call (800) 544-7769 or email [customsensors@turck.com](mailto:customsensors@turck.com)

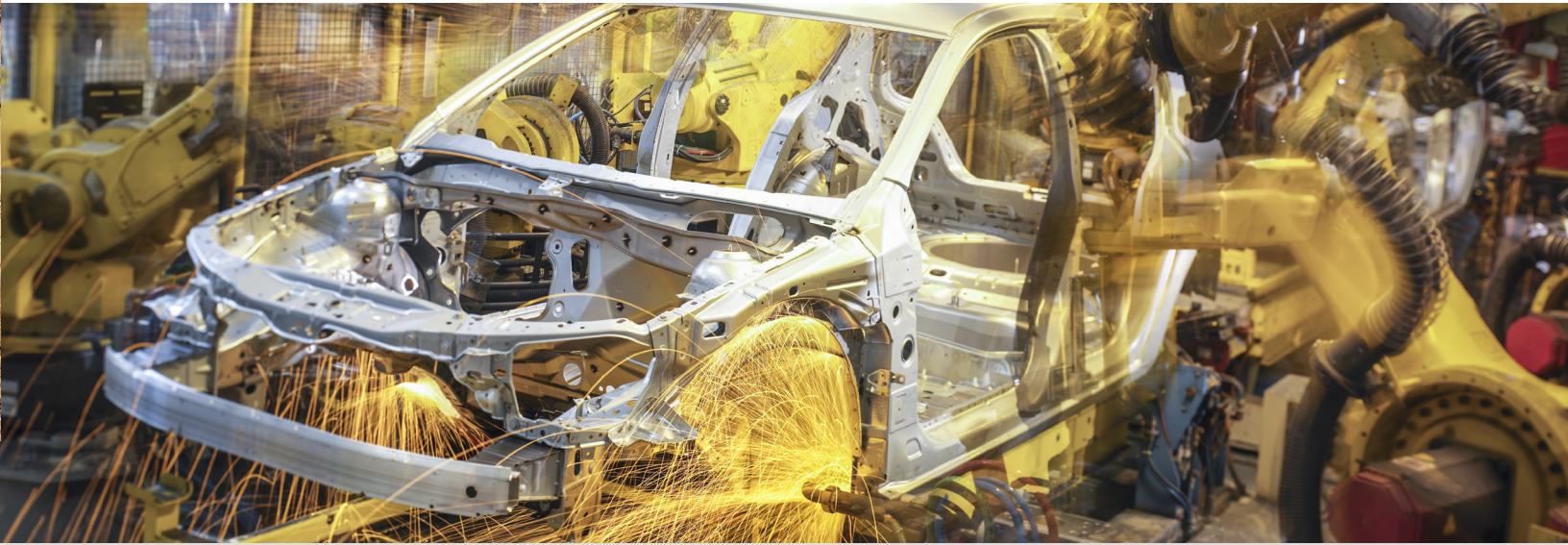


# A Global Sensor Leader + Custom Connectivity

## Customization - Our Core Competence

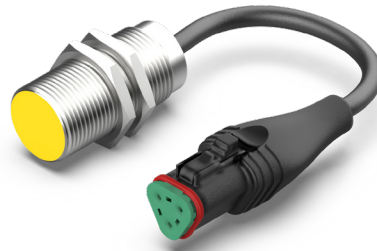
Turck is your custom sensor development partner. Every year, Turck develops hundreds of custom connectivity solutions for customers. With a high-level of in-house engineering expertise in both connectivity AND sensors, you are sure to find a custom

solution to meet your unique needs. Not only can we build it better, we have more connectivity options at a cost-effective price point. Pre-assembled solutions reduce assembly time and costs on site.



### Molded Pigtail Connections

Decrease assembly time. Let Turck create custom, ready-to-use pigtail solutions for you. Pigtails use connectors with multiple possible configurations for connections to sensors and other devices. Typical options include M12, M8, 7/8 or 1/2. Order quantities range from 5 to hundreds of units.



### Industry-Specific Connectors

From applications with wide temperature fluctuations to chemical washdown, Turck can create a custom solution to meet your specific industry requirements. Need a custom stainless steel food-grade connector solution, or a sub-assembly that connects multiple sensors suitable for outdoor use? Turck takes on the toughest challenges in nearly any industry, including mobile vehicles, food processing, automotive manufacturing, machine tools and many more. Typical connection styles include Deutsch, Amp or Turck industry-specific choices.



### Mil-Spec Connectors

Critical applications in the military need reliable sensor and connectivity solutions that stand up to extreme use and harsh environments. Since Turck offers Mil-Spec connectors, you will receive a fully assembled and overmolded product that is 100% factory tested and ready to use in the field. Our solutions provide a superior seal between the cable and connector, protecting against ingress susceptibility. Threaded, bayonet and reverse bayonet types are available.

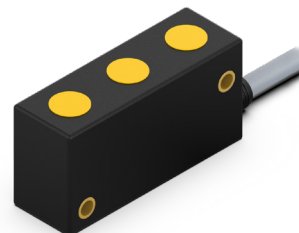
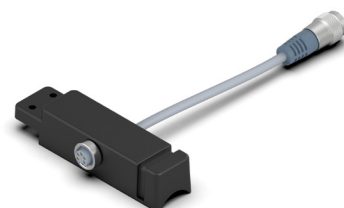
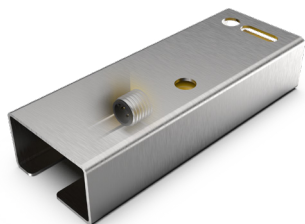


## Custom Mounting & Accessories for Application Flexibility

When applications call for sensor, switch or encoder mounting position flexibility, Turck can engineer a custom mount for you, no matter the housing type. Need your sensing device mounted at an unusual angle, on a sliding rail or placed in a bracket that allows for quick-change replacement? We can design a proof-of-concept solution to work around nearly any mounting restraints and put it to the test in your application. Additional capabilities

include overmolded/sealed mount features and specially-designed mounts for added sensor protection.

Contact Turck today to find out how to make your sensing devices easier to install with high-quality custom mounting solutions. Call (800) 544-7769 or email [customsensors@turck.com](mailto:customsensors@turck.com)



# Housing Design Solutions Built to Last

## Simple to Complex Customization – High-Quality is Standard

When a standard housing form factor won't do, the engineering experts at Turck can design and prototype a unique solution for you. Whether you need a sensor with an unusual housing shape

or require multiple sensors to be combined into one housing, we leverage our vast design experience for OEMs with our innovative, rugged sensors.



Consider the following if custom housing design is needed:

- Detection range
- Shock/vibration
- Housing material
- Available footprint/sensor placement
- Water ingress/humidity
- Power supply voltage



### Unique Shapes and Sizes

There may be multiple size and shape considerations when designing a custom sensor housing to fit into a defined space. Does the sensor need to be mounted at a unique angle such as on the end of a loader bucket, or will it be exposed to prolonged impact? Turck can design a custom solution that meets those needs.



### Multiple Sensors in One Housing

Streamline your sensing applications by combining multiple sensors into one housing. It can be helpful in applications where mounting space is limited and there is not a convenient way to mount multiple sensors. For example, closely positioned targets in a packaging application can be more reliably detected in a sensor array to detect physical wear.



### Sealing/Chemical Resistant

Corrosive environments such as those found in semiconductor applications or food processing can require special housings that stand up to chemicals. Housings made of FDA compliant materials, PTFE or stainless steel can be custom designed and maintain a long service life. Turck can also provide sealing for high moisture environments. This includes ratings of IP68/69K and even totally submersible options.



## Tailored Services that Save You Time



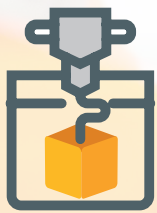
We never stop working for you. Turck offers a wide range of tailored services to meet your unique challenges. Need help with calibration, setting sensor parameters or custom labeling? We can save you time and free up your valuable resources for more critical needs.

Contact us to learn more about our range of services. Minimum order quantities may apply.  
Call (800) 544-7769 or email [customsensors@turck.com](mailto:customsensors@turck.com)

### Parts Kitting

Have a complex assembly that requires multiple Turck parts? No problem. Make sure your products arrive as you need them with our convenient kitting services. Let Turck package them together as kits, enabling you to use a single part number. You'll streamline ordering and save time.





## Rapid Prototyping

Reduce the risk of costly design errors with rapid prototyping. Turck can help you visualize how your custom product will fit and function with cost-effective CAD-based prototyping. From creating a concept model to testing how the solution will work in an application, our team of design engineers can step you through the process.



## Pre-calibration & Parameterization

Save time and resources by having Turck commission its sensors for you. A factory pre-calibrated or pre-programmed sensor can save time and is ready for use on power-up. Depending on the application, calibration or parameter setting can be difficult in complex machines or those with a small footprint. Turck can help you achieve optimal results. We test the devices to make sure they meet your desired specifications for optimum performance and easy device replacement when needed.



## Custom and Private Labeling

Turck can also help with your private labeling needs. We are able to customize labels to your specifications – even using your company logo, color scheme and part numbers. Our team can tailor your labels to your specific requirements for each product.

Contact us for a free quote!  
[customsensors@turck.com](mailto:customsensors@turck.com)

# Notes



Turck Inc. sells its products through Authorized Distributors. These distributors provide our customers with technical support, service and local stock. Turck distributors are located nationwide – including all major metropolitan market areas.

For Application Assistance or for the location of your nearest Turck distributor, call:

1-800-544-7769

Specifications in this manual are subject to change without notice. Turck also reserves the right to make modifications and makes no guarantee of the accuracy of the information contained herein.

Literature and Media questions or concerns?  
Contact Turck USA Marketing – [tusa.marketing@turck.com](mailto:tusa.marketing@turck.com)

# TURCK



30 subsidiaries and over  
60 representations worldwide!

**Printed in USA**