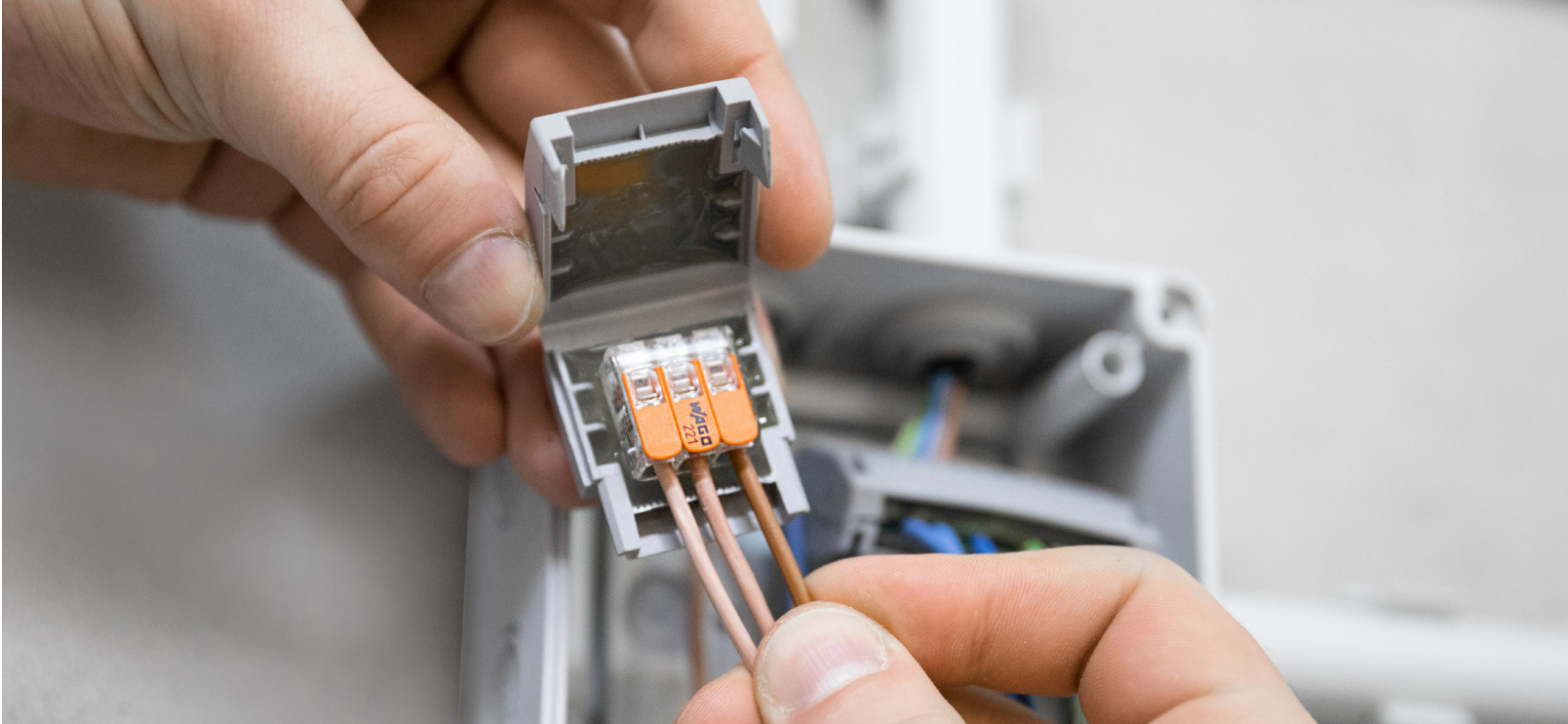




WAGO Gelbox for Splicing Connectors

Simple Moisture Protection Solution





Installation and Advantages

Simple Application

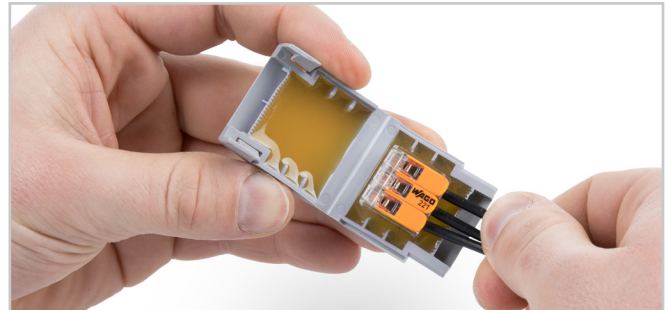
- Space saving, compact design
- Several connectors can be used in one gel box
- Easy handling through innovative design
- Easily extend circuits thanks to fast accessibility

Fast Application

- Time-Saving, due to no mixing and hardening of the gel mass is necessary
- Always ready for use
- Unlimited shelf life



Open the Gelbox at the side latches



Place the wired connector in the Gelbox



Close the Gelbox



Open the Gelbox., remove gel from the connector, open the connector and connect new components to the cable

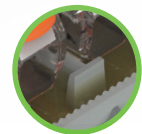
**READY
TO USE!**



Robust, yet
compact housing

Silicone-free gel

T-bar



Safe Applications

- The complete system consisting of Gelboxes & WAGO Splicing Connectors is IPX8-certified
- Excellent protection when Gelbox is only combined with 221/2773 Series Connectors; always the perfect gel displacement for safe installation
- IPX8 level of protection against moisture & water ingress
- Robust housing ensures ultimate stability
- Label-free Cellpack quality gel

Versatile Applications

- Can be used in all branches of industry due to silicone-free gel
- Can be used in the low-voltage range with an additional housing (double insulation)

The same concept now also for the 221 Series Inline Splicing Connector with Levers – additionally with a T-bar for positioning the connectors



Learn
more
today!

Technical Data

| Item Number | 221 -412 | 221 -413 | 221 -415 | 221 -612 | 221 -613 | 221 -615 | 221 -2411 | 221 -2401 | 2773 -402 | 2773 -403 | 2773 -404 | 2773 -405 | 2773 -406 | 2773 -408 |
|-------------|----------|----------|----------|----------|----------|----------|-----------|-----------|-----------|-----------|-----------|-----------|-----------|-----------|
| 207-1331 | 1 x | 1 x | - | | | | | | - | 1 x | 1 x | - | | |
| 207-1332 | 2 x | - | 1 x | | | | | | 3 x | 2 x | - | 1 x | 1 x | 1 x |
| 207-1333 | 3 x | 2 x | - | | | | | | 3 x | 2 x | - | - | | 1 x |
| 207-1431 | | | | 1 x | 1 x | - | | | | | | | | |
| 207-1432 | | | | 2 x | - | 1 x | | | | | | | | |
| 207-1433 | | | | 3 x | 2 x | - | | | | | | | | |
| 207-1372 | | | | | | | 2 x | 2 x | | | | | | |
| 207-1373 | | | | | | | 3 x | 3 x | | | | | | |
| 207-1375 | | | | | | | 5 x | 5 x | | | | | | |

Note: With other combinations, IPX8 protection cannot be guaranteed.

| | Item Number | Description |
|---|-------------|---|
|  | 207-1331 | Gelbox, IPX8, 221 and 2773 Series, size 1 |
|  | 207-1332 | Gelbox, IPX8, 221 and 2773 Series, size 2 |
|  | 207-1333 | Gelbox, IPX8, 221 and 2773 Series, size 3 |
|  | 207-1431 | Gelbox, IPX8, 221 Series, size 1 |
|  | 207-1432 | Gelbox, IPX8, 221 Series, size 2 |
|  | 207-1433 | Gelbox, IPX8, 221 Series Inline, size 3 |
|  | 207-1372 | Gelbox, IPX8, 221 Series Inline, size 1 |
|  | 207-1373 | Gelbox, IPX8, 221 Series Inline, size 2 |
|  | 207-1375 | Gelbox, IPX8, 221 Series Inline, size 3 |

Simple Application

- Voltage range: see connector voltage
- Rated current: see connector current
- Rated surge voltage: 2.5 kV
- Insulation resistance: 5 MΩ
- Continuous operating temperature: 105 °C
- Ambient temperature: 85 °C
- Physical properties: IPX8
- Suitable for indefinite storage